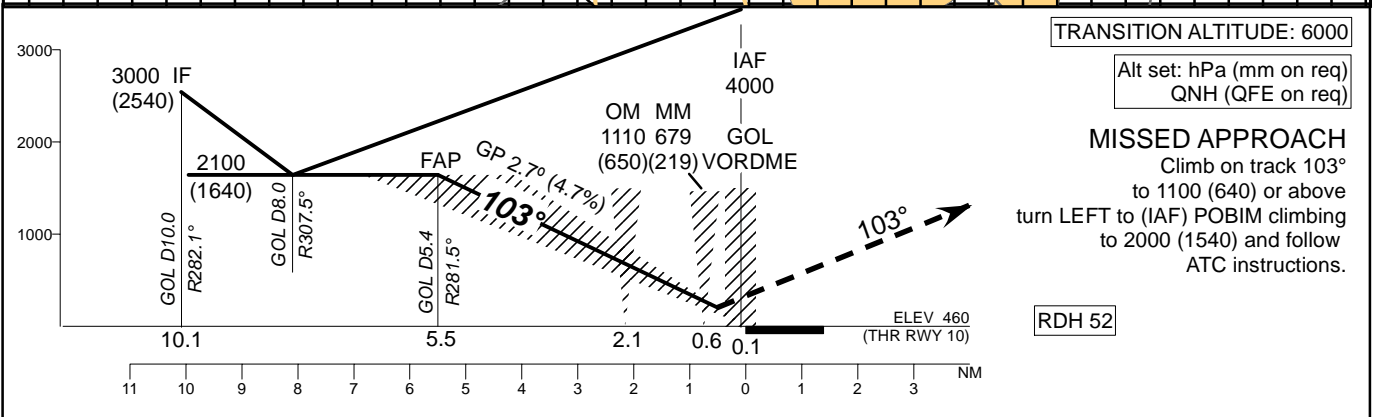
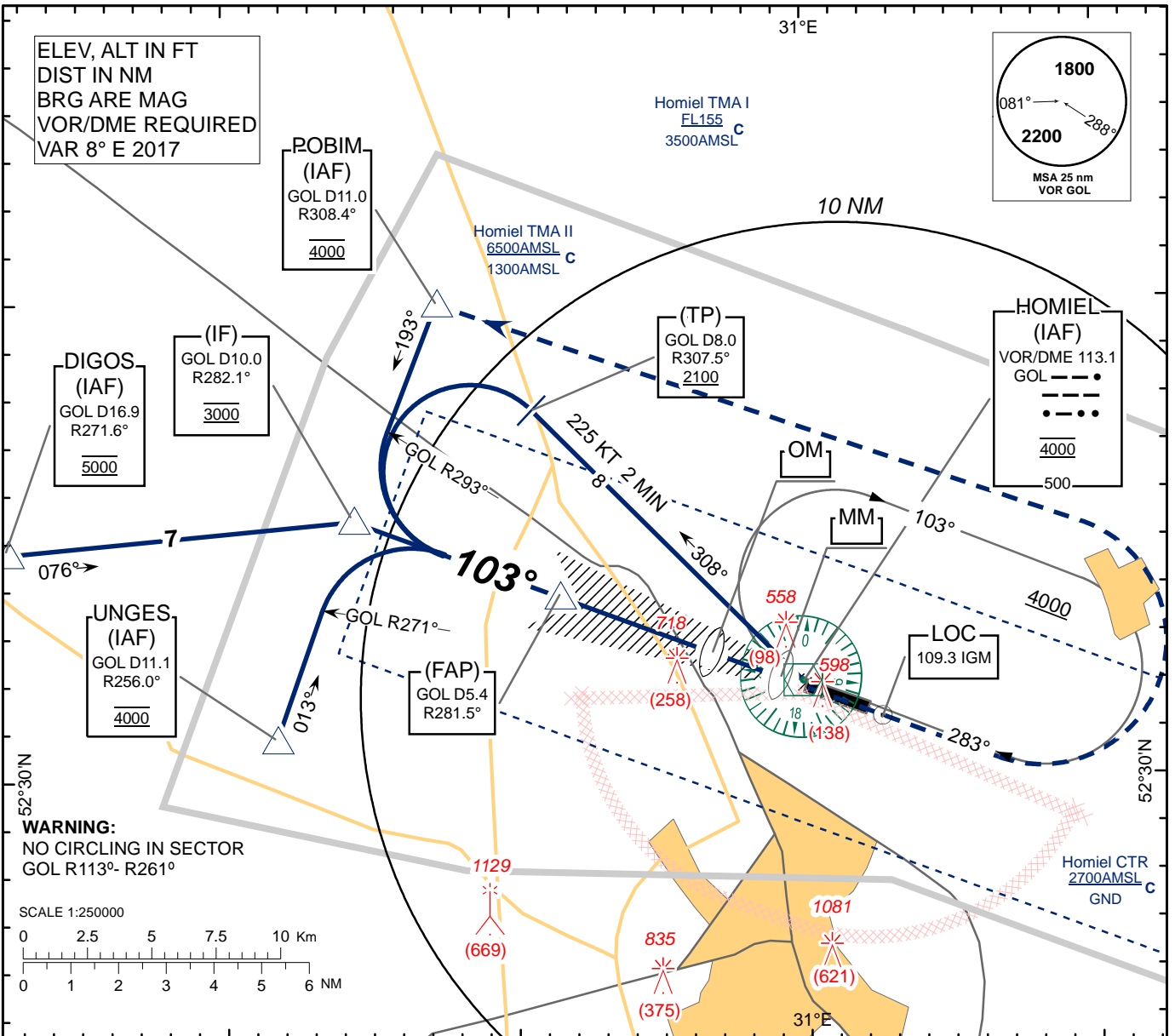


**INSTRUMENT  
APPROACH  
CHART - ICAO**

AERODROME ELEV 471  
HEIGHTS RELATED TO  
THR RWY 10 - ELEV THR 460

APP 126.100  
TWR 118.100  
MET 119.550 (EN)  
124.475 (RUS)

**HOMIEL  
ILS  
RWY 10**



TRANSITION ALTITUDE: 6000  
Alt set: hPa (mm on req)  
QNH (QFE on req)

**MISSED APPROACH**  
Climb on track 103°  
to 1100 (640) or above  
turn LEFT to (IAF) POBIM climbing  
to 2000 (1540) and follow  
ATC instructions.

RDH 52

CHANGE: ADD height over MM; COOR OM.

Aircraft Category		A	B	C	D							
Straight-in Approach OCA(H)	ILS Cat I	628 (168)	641 (181)	649 (189)	660 (200)	GOL	6	5	4	3	2	1
						DIST THR	6.1	5.1	4.1	3.1	2.1	1.1
						ALTITUDE	2100	1920	1630	1350	1070	780
Circle - to - land		860 (390)	860 (390)	1120 (650)	1120 (650)	HEIGHT	(1640)	(1460)	(1170)	(890)	(610)	(320)

Timing not authorized for defining the MAPt

GS	Kts	120	140	160	180	200	220
Desc.Rate(4.7%)	ft/min	570	660	760	850	950	1040

HOMIEL  
ILS  
RWY 10

**AERONAUTICAL DATA TABULATION**

<b>ILS approach to RWY10 from GOL VOR/DME, POBIM, DIGOS, UNGES</b>	
<b>Fix/point</b>	<b>Coordinates</b>
POBIM (IAF) R 308.4° D11.0 GOL	523958N 0304721E
DIGOS (IAF) R 271.6° D16.9 GOL	523446N 0303231E
UNGES (IAF) R 256.0° D11.1 GOL	523050N 0304144E
(TP) R 307.5° D8.0 GOL	523744N 0305036E
(IF) R 282.1° D10.0 GOL	523526N 0304426E
(FAP) R 281.5° D5.4 GOL	523349N 0305130E
GOL VOR/DME (IAF)	523200.6N 0305949.9E
IGM LOC	523115.7N 0310233.6E
OM	523236.6N 0305642.6E
MM	523204.4N 0305902.6E
THR RWY 10	523152.08N 0305956.42E